

MR

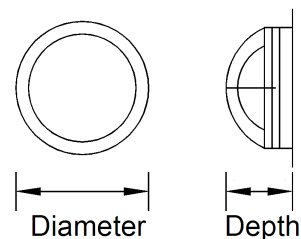
EXTERIOR BULKHEAD WALL MOUNTED / SURFACE MOUNTED

FEATURES

- Vandal Proof Exterior Bulkhead.
- IP65 Rated.
- Die-cast Aluminium Body.
- Polycarbonate Diffuser.
- Silicone Gaskets.
- Integral control gear.
- Available with a security grill for extra protection.
- Eyelid option available.
- Black powder coat finish, other colours available on request.
- LED option, L75 B50@50,000.
- PLC available on request.



Specifications	
Diameter	260mm - MR13 360mm - MR17
Depth (Standard)	125mm - MR13 150mm - MR17



Technical Information		
Series	System Power	Board Output
MR13	15.3W	1500 (lm)
MR17	22.2W	2500 (lm)

PRODUCT CODE

Example code: MR17/GR/LED

Specifications subject to change without notice.

Product Series	Size	Option	Type	ECG / Emergency Options
MR	13 Small	(Blank) No cover	LED	ME Maintained Emergency (MR17 only)
	17 Large	GR Grill		
		EL Eyelid		

FREND
lighting

phone 1300 241 087

fax (617) 3272 9000

email sales@foslighting.com.au

PO Box 268

14 Jaybel Street, Salisbury

Brisbane QLD 4107

www.frend.com.au